



Search:
Parade Craze

Pierce Design + Build
Pierce Remodel
(801) 540-8123
steve@
piercedesignbuild.com
piercedesignbuild.com



PIERCE
design + build

TOTAL SQ. FT. = 4,972
BEDROOMS = 3
BATHROOMS = 2

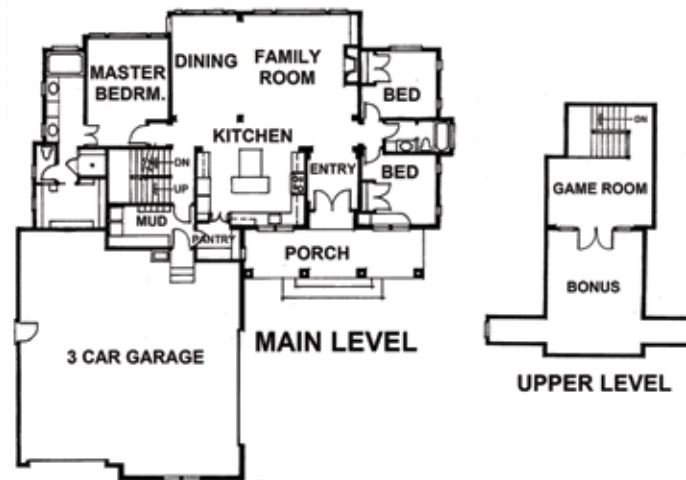
\$690,000
With lot and landscaping



HOME FEATURES

- "La Belle Maison" is French for "The Beautiful Home."
- Heavily inspired by European design mixed with modern elegance. This breathtaking home stands out above the crowd for the high attention to detail and creative use of space.
- The setting is stunning! It is nestled in the valley of Mountain Green, providing serenity and peace to this ideal location.
- The grandiose full-wall windows capture this picturesque landscape all year round.
- To make the homeowner's vision a reality, with help from the design team, Pierce Design Build started with the front entry doors. The arched top mahogany and glass doors make the perfect first impression. The elaborate trim work gives a sense of visual interest without overpowering other unique features.
- Various styles, colors and patterns of floor to ceiling marble are used throughout the home.
- The custom-made hickory floors feature a specialized finish that actually improves with age.

DIRECTIONS: From Highway 89: Exit onto I-84 East toward Cheyenne/Morgan. In 4.6 miles, take Exit 92 for UT167. Turn right on UT167 and continue north for 1.5 miles. Continue west on Old Highway Road for .07 miles. Take a slight left onto Cottonwood Canyon Road. Follow for .07 miles. Arrive at 4162 Cottonwood Canyon Road.



MEMBER SUBCONTRACTORS & SUPPLIERS: Ace Fab Welding, Boman Kemp, Buhler Landscape, Contempo Tile, CS Construction (Caleb Stoker), Hearth & Home, Hyrum McKay Bates Design, Inc., Moyes Glass, Pierce Design Build, Rands Roofing, RC Willey, Stoker Brothers, Wheelwright Lumber



Search:
Parade Craze

Pierce Design + Build
Pierce Remodel
(801) 540-8123
steve@
piercedesignbuild.com
piercedesignbuild.com



PIERCE
design + build

TOTAL SQ. FT. = 4,972
BEDROOMS = 3
BATHROOMS = 2

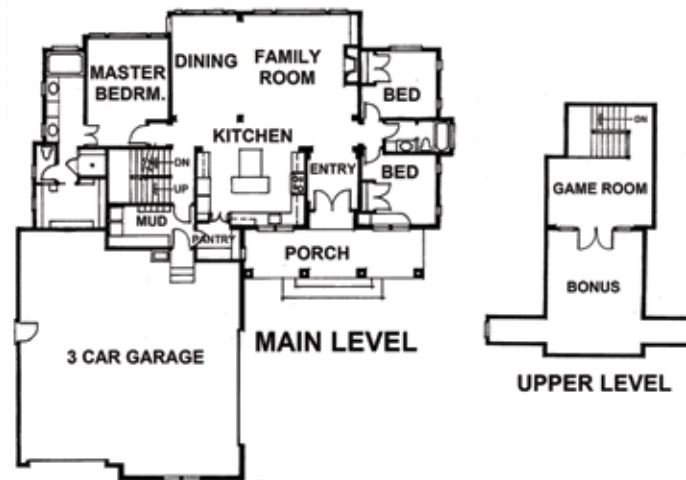
\$690,000
With lot and landscaping



HOME FEATURES

- "La Belle Maison" is French for "The Beautiful Home."
- Heavily inspired by European design mixed with modern elegance. This breathtaking home stands out above the crowd for the high attention to detail and creative use of space.
- The setting is stunning! It is nestled in the valley of Mountain Green, providing serenity and peace to this ideal location.
- The grandiose full-wall windows capture this picturesque landscape all year round.
- To make the homeowner's vision a reality, with help from the design team, Pierce Design Build started with the front entry doors. The arched top mahogany and glass doors make the perfect first impression. The elaborate trim work gives a sense of visual interest without overpowering other unique features.
- Various styles, colors and patterns of floor to ceiling marble are used throughout the home.
- The custom-made hickory floors feature a specialized finish that actually improves with age.

DIRECTIONS: From Highway 89: Exit onto I-84 East toward Cheyenne/Morgan. In 4.6 miles, take Exit 92 for UT167. Turn right on UT167 and continue north for 1.5 miles. Continue west on Old Highway Road for .07 miles. Take a slight left onto Cottonwood Canyon Road. Follow for .07 miles. Arrive at 4162 Cottonwood Canyon Road.



MEMBER SUBCONTRACTORS & SUPPLIERS: Ace Fab Welding, Boman Kemp, Buhler Landscape, Contempo Tile, CS Construction (Caleb Stoker), Hearth & Home, Hyrum McKay Bates Design, Inc., Moyes Glass, Pierce Design Build, Rands Roofing, RC Willey, Stoker Brothers, Wheelwright Lumber